

IntellusUltra

Quick Guide to Programming the IntellusUltra Controller

1

How to Tell Which Program Is Running

Manual program:

- Program LED is off



Diurnal program:

- Program LED is on
- “Day” or “Night” appears in the display



+

Day 23.5C 70%RH
 LT:011

Multi-Step program:

- Program LED is on
- The actual time appears in the display



+

12:30PM 23.5C 70%RH
 LT:011

2

Program Descriptions

Manual program:

- All parameters (temperature, light, humidity, etc.) remain constant until changed

Diurnal program:

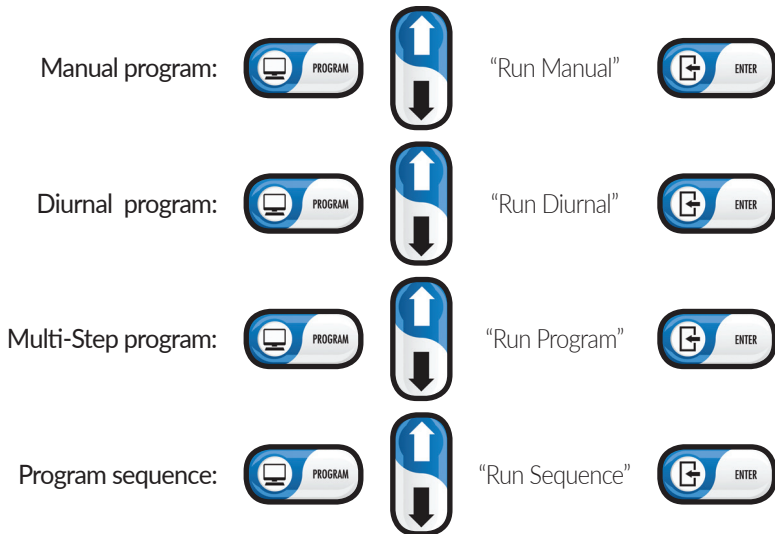
- Simple change between day and night settings
- All lamps are turned on during the day period and off during the night period
- Individual settings are possible for:
 - Start and end of day period
 - Day and night temperature
 - Day and night humidity (if applicable)
 - Day and night auxiliary (if applicable)

Multi-Step program:

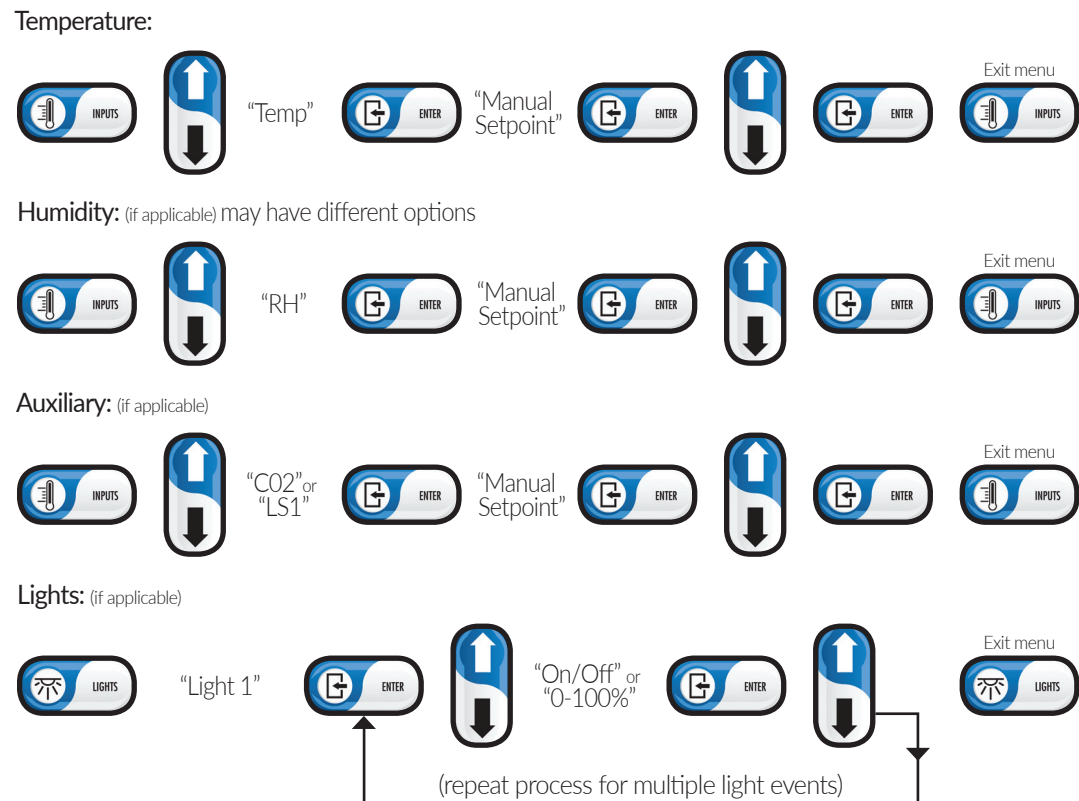
- Multi-step settings for all controlled parameters based on a 24-hour or countdown clock
- Programs can run as non-ramping or ramping
- Ability to assign names to program files
- Ability to sequence multiple programs together

IntellusUltra

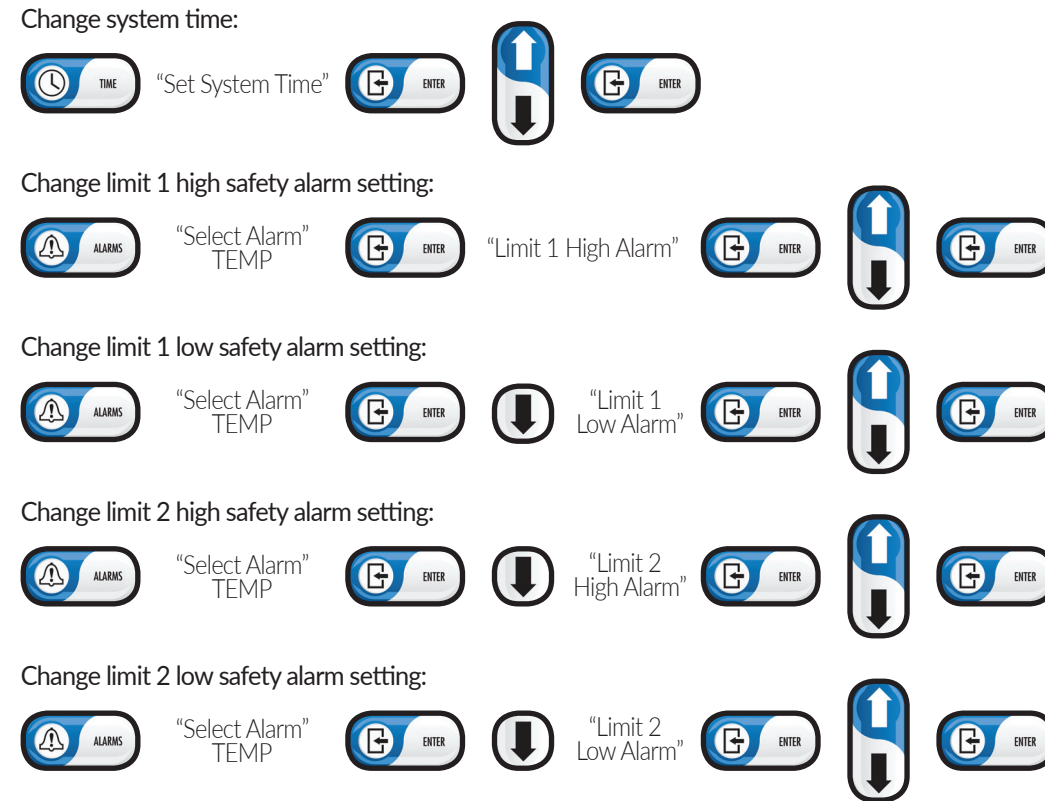
3 How to Run Various Programs



4 How to Change Manual Set Points



5 How to Change Basic Settings



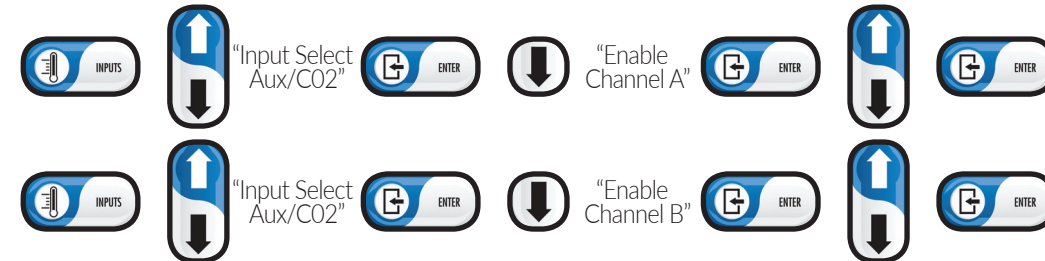
6 How to Enable Humidification (if applicable)



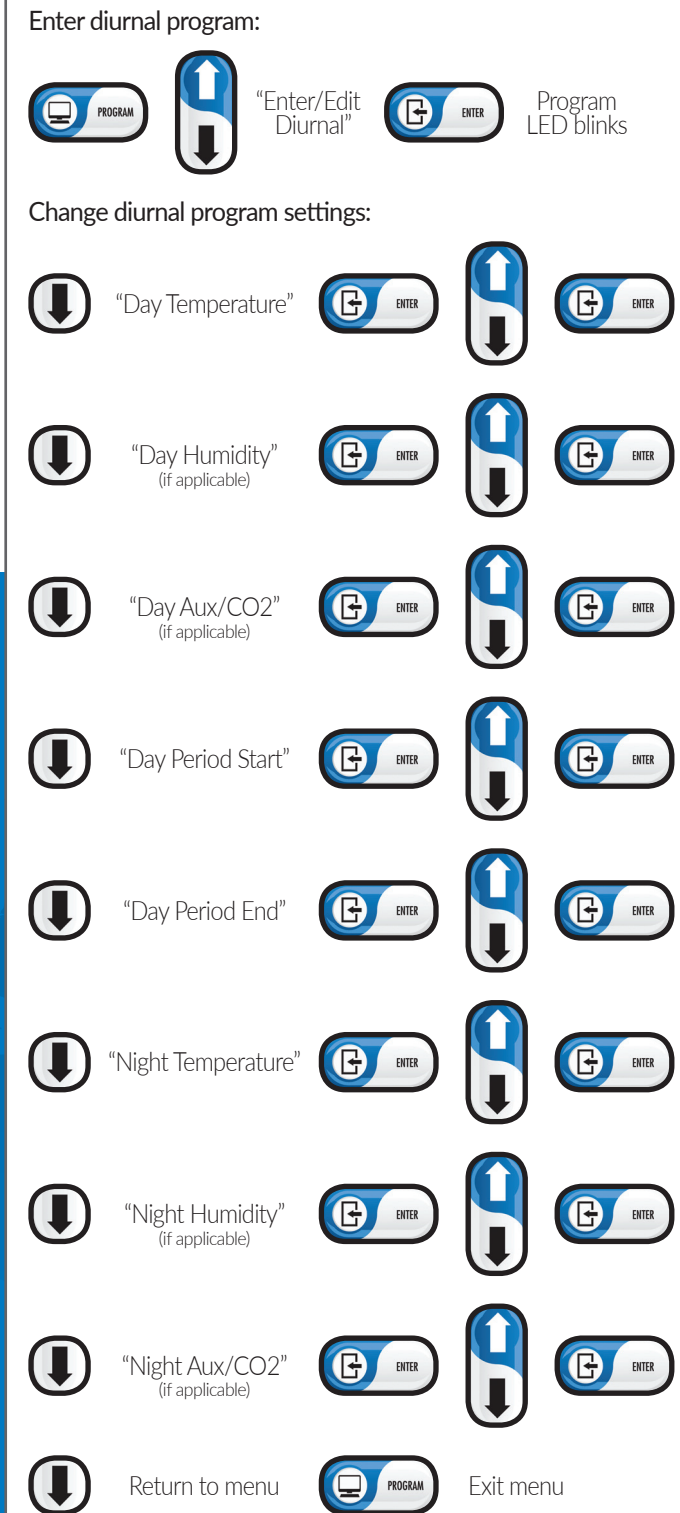
How to Enable Dehumidification (if applicable)



How to Enable Aux/CO2 (if applicable)



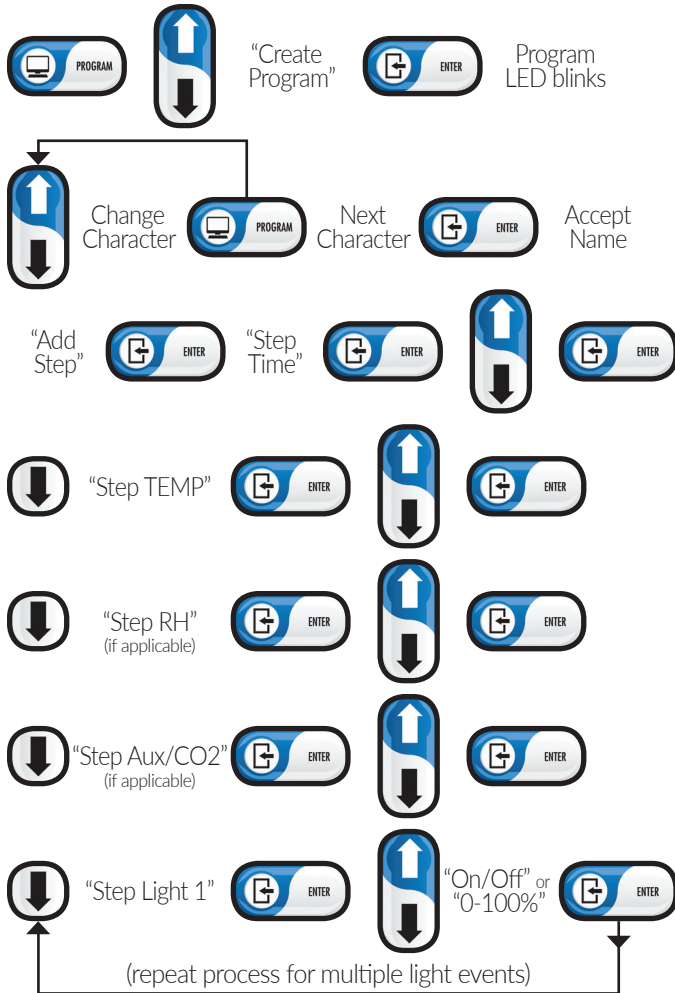
7 How to Configure Diurnal Program



Programming Note: The controller will default back to the main display when no key is pressed after one minute. Please keep this in mind when programming the controller. Problems? Questions? Refer to the IntellusUltra controller manual for more instructions. Contact us for additional support.

How to Enter a New Program

Enter a new program:



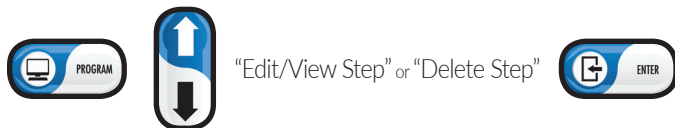
Add a step to the program:



View, edit or delete steps in the program:

Make sure no parameter is flashing.

Find the step you want to edit, view or delete.



Pressing "Enter" on "Delete Step" automatically deletes step.

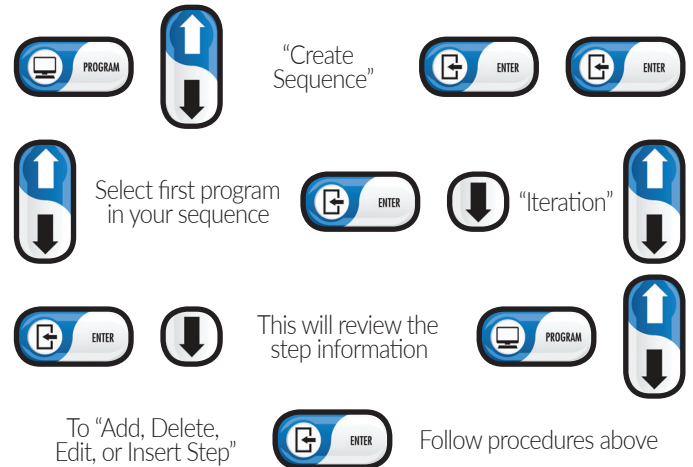


Exit program:



How to Create and Edit Program Sequences

Note: This option does not appear when sequence is running; controller must be set to manual program or an individual program.

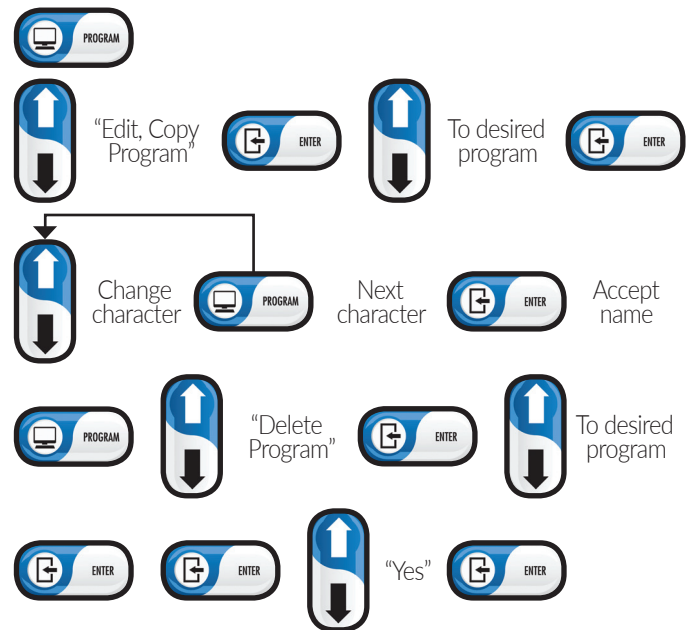


When finished programming the sequence, use procedure "Exit program" in section 8.

How to Edit, Delete and Copy Programs

Edit an existing program:

Use steps under "How to enter a program" in section 8 to edit program.



What do I do if an alarm sounds? Press any key to disable buzzer sound.

To view current process values. Note whether or not a high or low temperature alarm is occurring based on the temperature process.

If a limit 1 high/low temperature alarm is occurring: Use procedure in section 5 "Change limit 1 safety alarm setting" and change high safety alarm setting to a value higher or lower than the current process value.

If a limit 2 high/low temperature alarm is occurring: Use procedure in section 5 "Change limit 2 safety alarm setting" and change high safety alarm setting to a value higher or lower than the current process value.

The chamber will turn itself back on. If, after a short time, the chamber experiences another safety alarm or you suspect a fault with the chamber, please turn off the unit and contact us.